



SANDEEP ENTERPRISES

MANUFACTURING INNOVATION

AN ISO 9001:2015 CERTIFIED COMPANY



ADDRESS

M-17, MIDC, Waluj,
Chhatrapati Sambhajinagar-
431136

CONTACT

Mr. Sandeep A Somase
Mobile-+91-9689886310



Background

- History

Sandeep Enterprises is mainly a Precision Machined Components And sheet Metal assembly manufacturing company was founded in 2000 by Mr. Ashok S Somase.



MISSION

To delight our Customers & Employees by consistently manufacturing high quality products through Innovation, Research and Development and by maintaining Global best practices in Quality standards and Safety.

VISION

To be the market leader in the "Precision Machined Components And Fabrication assembly" by exceeding Customer expectations in Quality and Service, attain operational excellence in Manufacturing, Total Quality Management, Safety & Supply Chain facilitated through our fully compliant state-of-the-art manufacturing plant.



Our Core Values

- Manufacturing products known for Performance, Innovation and Quality.
- Meeting challenges with enthusiasm.
- Winning together with our people and our clients.
- Igniting a revolution in Automotive Technology.
- Maintaining a balance between advancement and environmental concern.



Quality policy

We all at SANDEEP ENTERPRISES are committed to meet customer satisfaction by manufacturing of “Precision Machined Components” of Excellent, Consistent and Reliable Quality. We shall achieve this through Continuous Improvement in Technology, System, Method and Resources Management

Ashok S Somase
(Managing director)

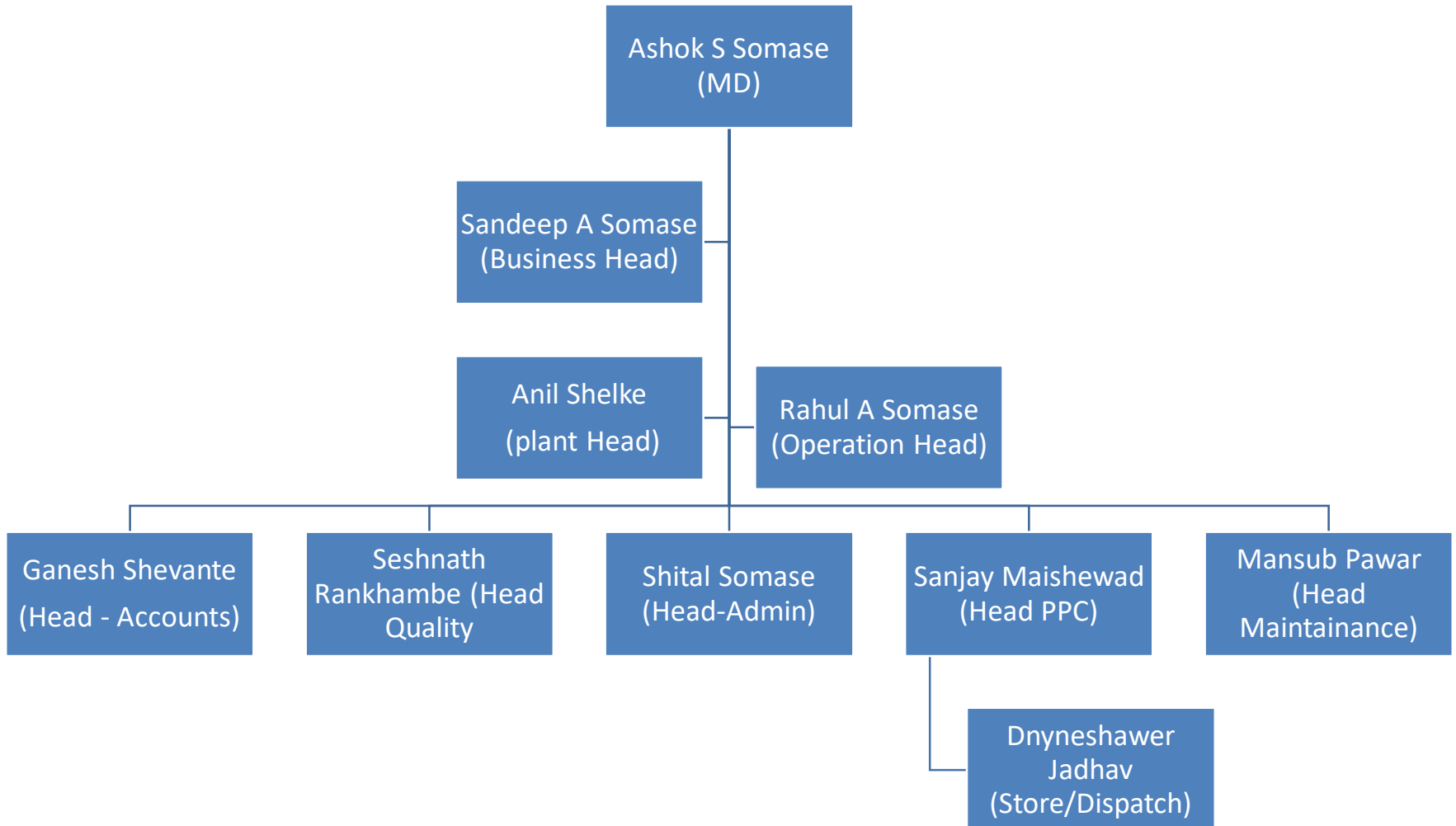


Business operation

- Sandeep Enterprises is a Pioneer Group engaged in manufacturing of various types of Customized and Precision Quality Auto parts and Components for all types of Automobiles from 2-wheelers to 4-wheelers.
- Our manufacturing facility is duly ISO Certified and equipped with latest in machinery from CNC Turning Machines, Tube cutting and chamfering machine, VMC Machine, TROUB Machine, Center less Grinding, Lathe Machine, Drilling and Tapping, Cutting Machines, STL-Second operation, Power Press machine, CO2 Welding, Automatic tube cutting and chamfering machine line etc. to produce high precision quality products. Group is led by well experienced management and manpower.



Organisation Structure





List of Machines

	Machine Name	Model no.	Make
1.	Single spindle Automatic lathe (06 nos.)	A-25	Geetech machine tool
2.	Single spindle Automatic lathe (14 nos.)	A-25	Abhijat Equipments.
3.	Single spindle Automatic lathe (06 nos.)	A-25	Lip Precision.
4.	Single spindle Automatic lathe (10 nos.)	A-32	Sumangal Machine.
5	SOCO automatic Tube cutting and chamfering	25-300/25-60	SOCO machine Taiwan
6.	Single spindle Automatic lathe (04 nos.)	A-42/60	AbhijatEquipments.
7.	Lathe machine (1 nos)	4.5 feet	Payal Machine Tools.
8.	Drill Machine (08 nos.)	3/4	Prashant.
9.	Tapping machine (05 nos)	12 mm	Tapex Gujarat.
10	Centre less Grinder (1 nos)	C G-100	New Life machine Tools.
11.	Centre less Grinder (1 nos)	C GH-100	Bhagwansuns.
12.	CNC bar feeder machine (1 nos)	M-42	Abhijat Equipments.
13.	CNC Machine (2 Nos) (Proturn)	135	Pride M/c Tool Ltd
14.	CNC Machine (16 Nos) (JOBBER XL)	200	Ace Micromatic
15.	VMC machine	1 nos	AMS
15.	Power Press (5Nos)	10 ton—1 30 ton—2 50 ton-1 70 ton-1	Jay shakti
16.	Knurling SPM	6 nos	SPM
17.	Automatic Circular saw line (Tube/Bar cutting and facing chamfer	2 nos	JLH machine



- Product range :
OD = 4mm to 200 mm
- Infrastructure :
31500 sq feet area
- 150+ running components



MACHINERIES

Automatic Circular Saw Machine



CAPACITY

UPTO Ø80 MM

Automatic Chamfering Machine with autoloader



CAPACITY

UPTO Ø80 MM



MACHINERIES



TUBE CHAMFERING MACHINE

SOCO DEF-FA/60SS

CAPACITY : up to 300mm in
working length



TUBE CUTTING MACHINE

SOCO DEF-FA/127SS

CAPACITY : up to 127mm in
working Diameter



MACHINERIES

TRAUB MACHINE



CAPACITY

Ø4MM TO Ø60 MM

CNC TURNING MACHINE



CAPACITY

SWING - 510mm

CHUCK - 210mm



MACHINERIES

Power Press



CAPACITY

10 To 70 TONN

Centreless Grinding



CAPACITY

5 To 100 mm in working
Diameter



VARIOUS TYPES OF PRODUCTS

FLARING TUBE



OUTER TUBES



PLATED TUBE



INNER TUBES



ALUMINIUM TUBES



VARIOUS TYPES OF PRODUCTS

Both side Knurl and Hardened Tubes



Other Machining Parts



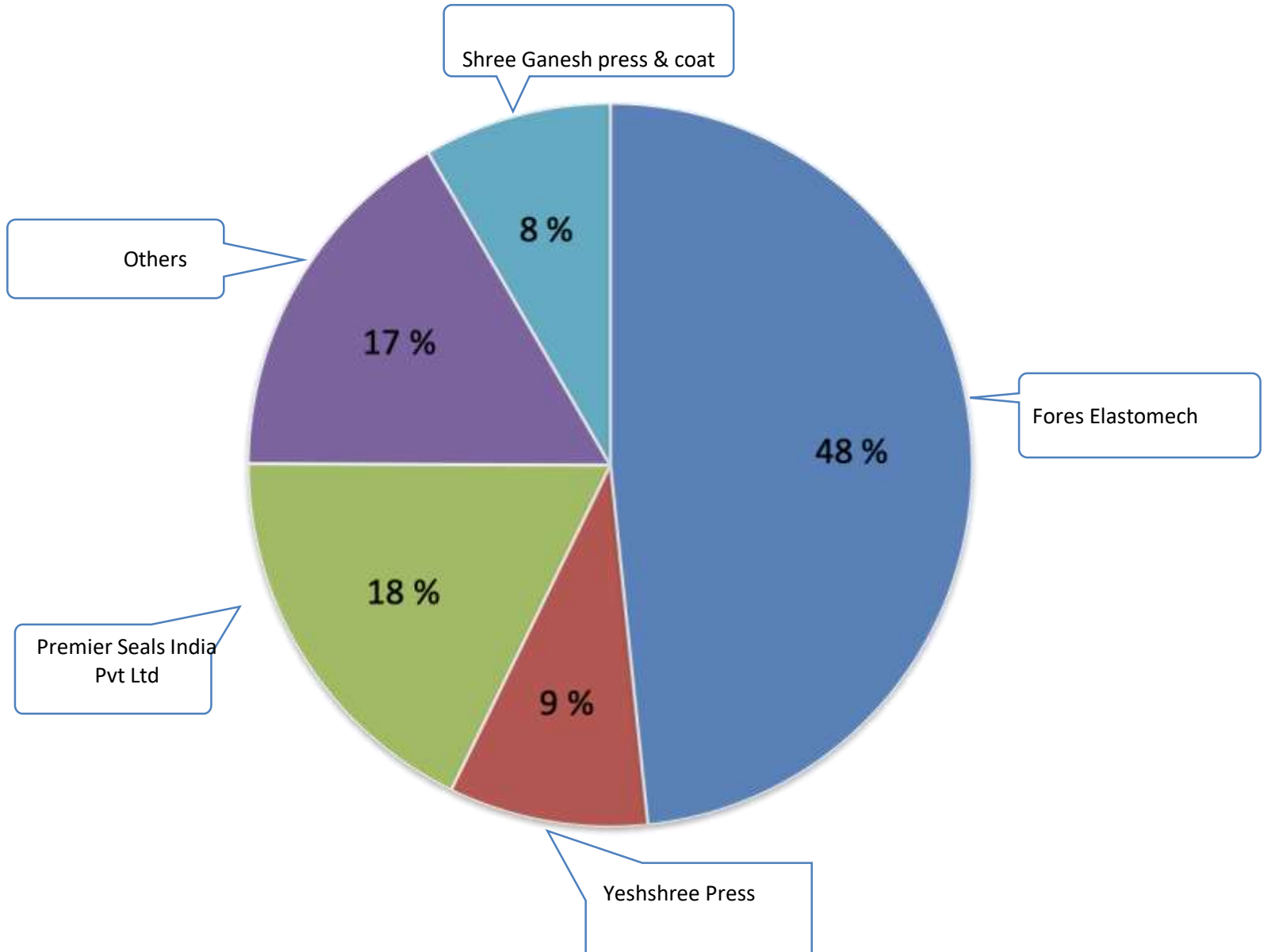


Our Valuable Customers

- Fores Elastomech (i) pvt ltd. (earlier varroc elastomers)
- Sujan Contitech Avs India Pvt Ltd.
- Premier Seals India Pvt Ltd.
- Yeshshree press Comps Pvt.Ltd
- Shree Ganesh Press n Coat Pvt.Ltd
- Aurangabad Auto Ancillary Pvt.Ltd
- Aurangabad Auto Engg. Pvt.Ltd
- AGM Corporation



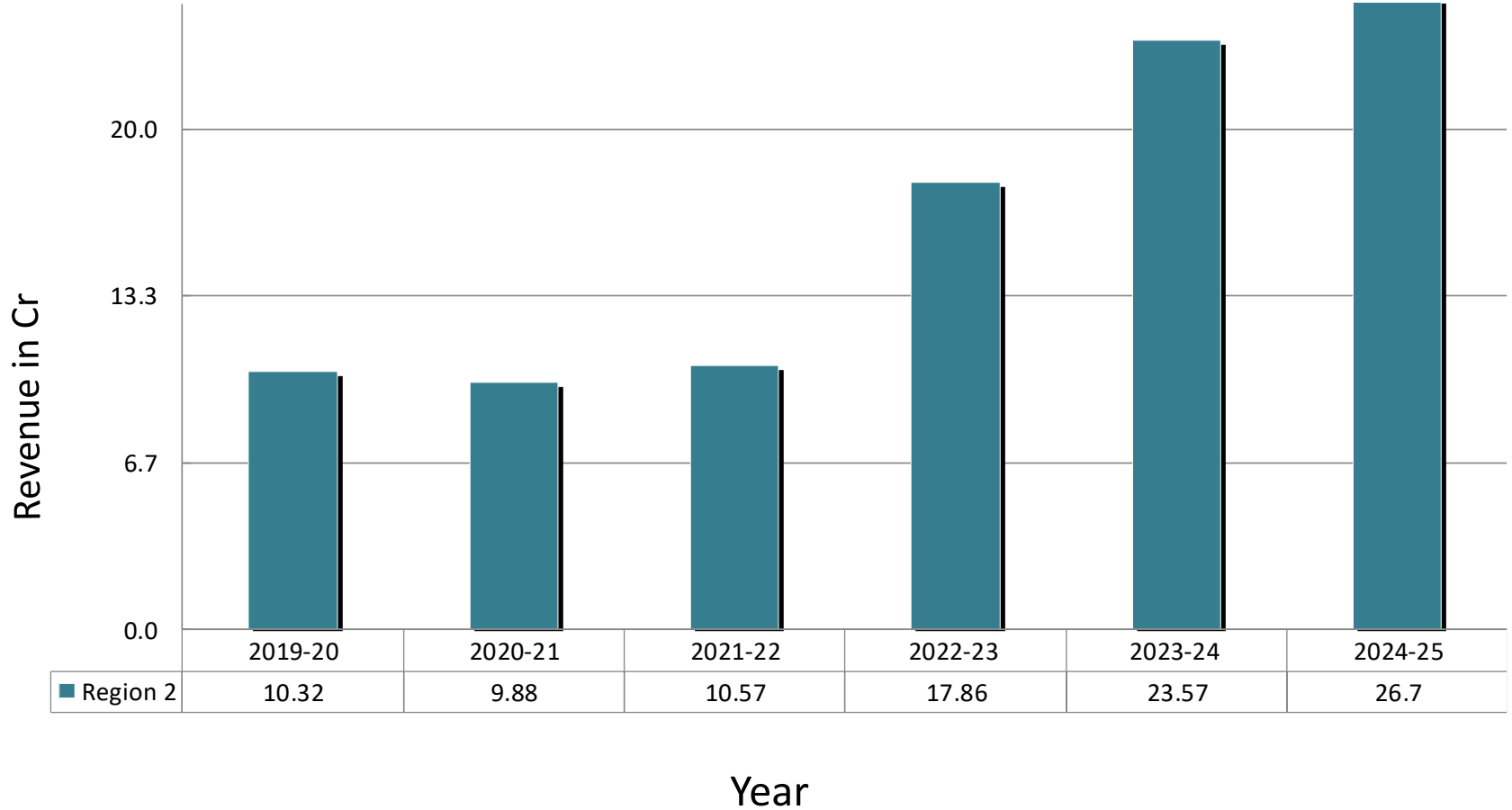
Customers Sales Distribution





Year On Year Growth

Financial Years





Follow Us On



Sandeep Enterprises



sandeepent1001@yahoo.in

sandeepsomase28@gmail.com



+91-9689886310



Thank you!

A close-up photograph of a hand holding a black marker, finishing the word 'you!' in cursive. The marker is positioned at the end of the word, and the hand is visible on the right side of the frame. The background is white.